



NEWS

Human-Elephant conflict hotspots

Ward 15 In Hwange, Elephant crop raiding incidents are high. This is adjacent to Sikumi Forest area.

Snare Removal



In one month, over 15 wire snares were recovered within the main research area.

Water is needed

The area is currently very dry with few animals and elephants around, except for those passing through. We need to urgently put in water at some of the waterholes and are requesting support.

The Research 40 foot container moves onto site.

We have finally managed to move the 40 foot container onto the site, although not without help from Forestry and other surrounding community members. Thanks to all that helped.

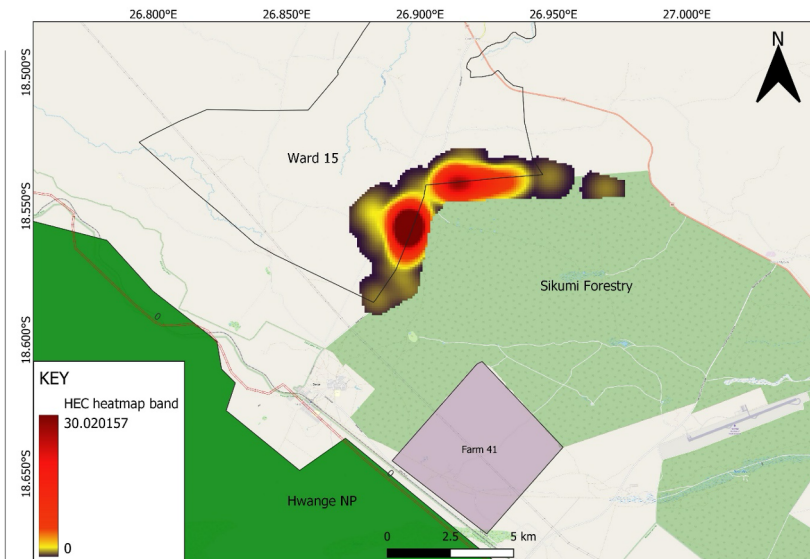


Figure 1 A heatmap depicting crop raiding by elephants in Ward 15, Hwange.

Human-Elephant Conflict Hotspots

From March 2023 to end of July 2023 our research team with community members on the ground in Ward 15 have been monitoring and recording crop-raiding incidents by elephants in the area. The conflict has lead to resentment and hostility towards elephants, especially with those communities living in close proximity to the protected areas. Next year we are wanting to expand the research area to other nearby Wards and we are currently looking for funding support for this to become a reality.

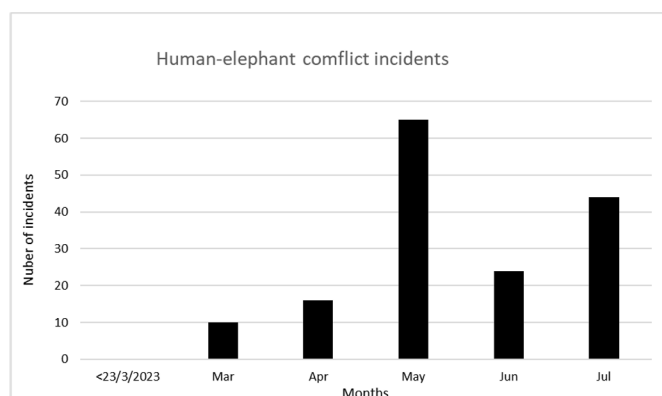


Figure 2 Shows the number of monthly recorded crop-raiding incidents by elephant

Animal Species identified in Core Area.

The success of wildlife surveys heavily relies on the use of various techniques. The methods that we use include direct observation, spoor identification and dung identification. Sound also helps in identifying the elusive and those animals that are mostly nocturnal. For every sighting, we mainly record the GPS location, species identified and population size. Based on the ongoing wildlife surveys and management efforts, a total of 22 distinct mammal species have been identified in the study area. The regular sightings of elephants, warthogs, and giraffes have been outstanding.

Continuous monitoring, data collection, and analysis contribute to a deeper understanding of the species' populations, behavior, and habitat requirements. Such insights support evidence-based conservation decisions and ensure the long-term sustainability of wildlife populations and their ecosystems. The team is committed to continually monitor wildlife in the landscape.

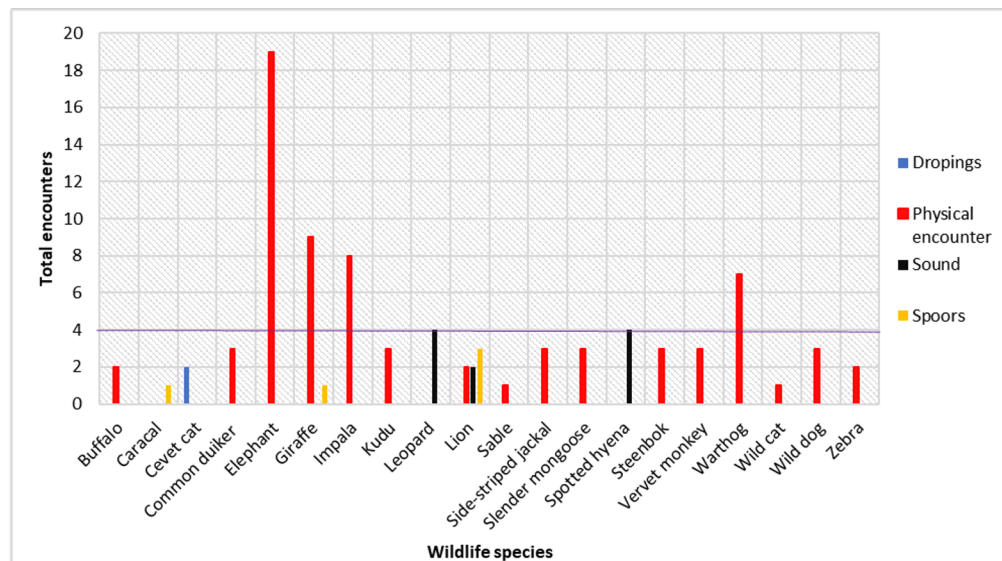


Figure 3. Shows animals that have been identified in August

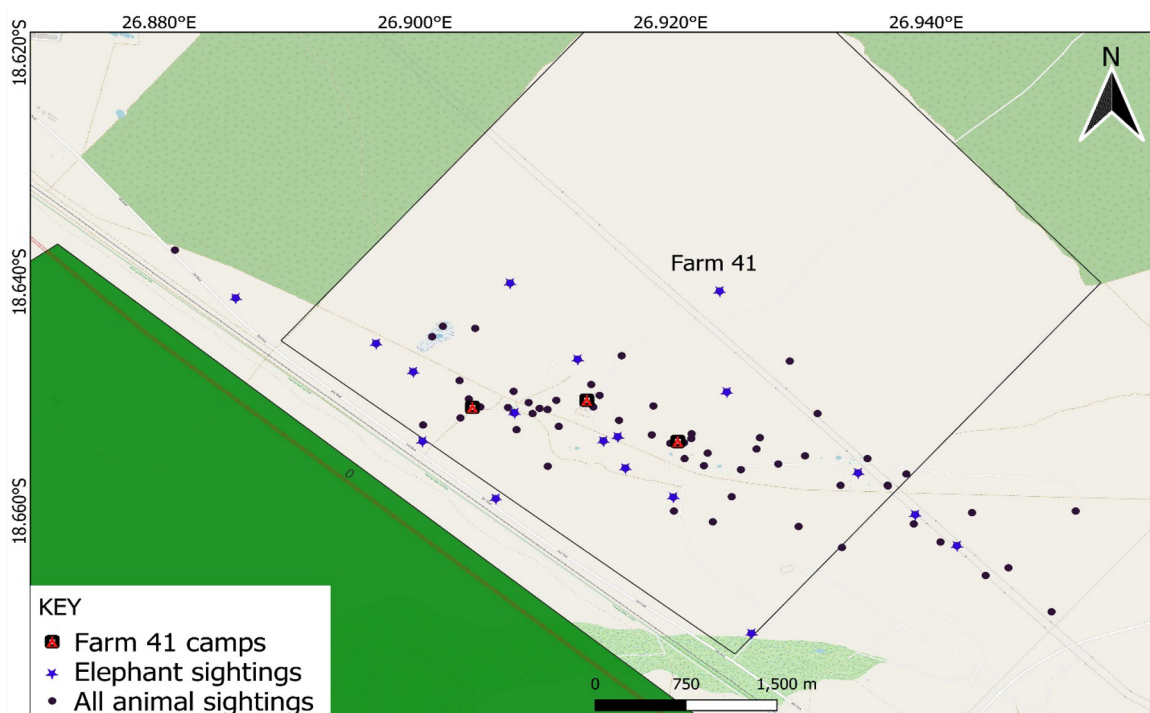


Figure 4. shows the area that has been surveyed in August and the location of the identified animals

Please, We NEED YOU HELP



Our Wish List

- Borehole
- Water for Wildlife pans
- Piping
- Water tanks (10 000 litres x 2)
- Water tank stands
- **40 foot container SPONSORED**
- Research Vehicle
- Uniforms
- Hardware
 - Rake
 - Hoes
 - Spades
 - Steel trunks and locks
 - Ropes
- First Aid Kit
- **Cutlery, pots, pans SPONSORED**
- Stationary
- Tents, beds, bedding, towel
- Computer, laptop
- External hard-drives, flash-drives
- Extension cord
- Solar energy
- 44 gallon drums
- Smart phones
- Solar fridge
- Camera
- Binoculars
- Small backpacks
- Cleaning materials



Our Team

Board of Trustees

Alan Elliot, Bruce Beckley, Brett Childs,
Laurie Ward, Charlene Hewat

Advisors

Darren McKissock, Debbie Grant, Veronica
Chapman, Peace Chuma, Richard Hoare

Communications, Relations & Research Coordinator

Charlene Hewat

Junior Researcher

Nick Ncube

Field, Camp Assistant

David Ncube

Contact Us

Farm 41
Dete, Matabeleland North
Zimbabwe
+263 (0) 712408864
charliehewat@gmail.com
info@presidentialelephantsresearchtrust.org
www.presidentialelephantsresearchtrust.org

Thank you for your support!